

size:427.5x185mm

Wireless Optical Finger Mouse User Guide

Features :

Health---Ergonomics design - Natural movement of your forearm and wrist reduce repetitive strain injury.



Effort-saving--- Slight movement allows the cursor to move over the full screen smoothly.

Convenient---Except for glass, the finger mouse works almost any surface, such as wooden table, laptop itself, clothes and even your skin.

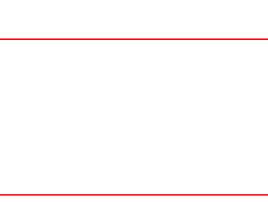


Compact---Stylish, space saving and easy to carry. The compact design allows users to type with the finger mouse on the index finger.

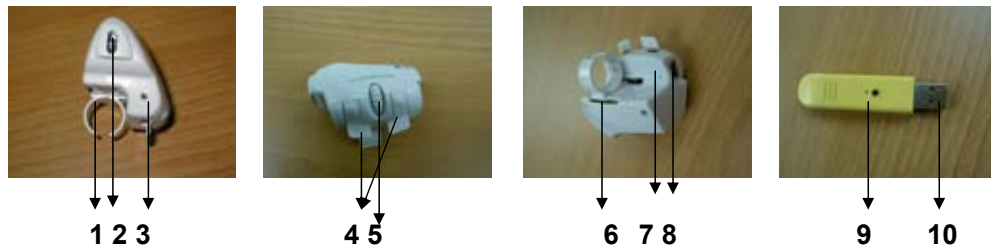
Multi-functional---The finger mouse could also be used as a wireless remote control for presentation, training, seminar etc.



Economical---The high quality internal lithium-ion battery is rechargeable it can be recharged for several hundred times, saving battery.



Appearance and simple direction:



1. ring 2. sensitive head 3. mouse id set button 4. press key 5. contact roller 6. ring slot 7. charging LED 8. mouse USB slot 9. receiver set button 10. receiver USB connector

Operating manual :

How to use :



1. First, three sizes different finger rings inside your packing, choose one to suit the user index finger.

2. The rings are adjustable and hold the mouse in cavity.



3. Put the ring on your index finger so your finger can touch the mouse surface. The cursor will move Your desired position.

4. Plug the receiver into the USB port of the computer. After pressing the small button on the receiver, the LED indicator on receiver starts flashing rapidly, then press the synchronize button inside the small hole on the finger mouse at same time. Once the LED on the receiver turns on without flashing, the synchronization is completed.



Stand by time :



1, Power Management Feature: automatically shuts off after leaving unused for 5 minutes. Press either the left or right button for awaking the device.



2. Power on & power off: Press both the left and right button for 5 seconds to turn on/off the device.

Battery recharge :



1, Connect the finger mouse to the computer with USB cable for recharging the battery inside the finger mouse.



2. The wireless finger mouse can be used as a wired optical mouse while charging.

Trouble shooting:

If the finger mouse dose not work properly

- 1, Make sure that if the finger mouse is power on ,please press two button 5 sec.
- 2, Check that the receiver's USB connector is firmly attached to the USB connector of your computer.
- 3, Check to make sure the battery have no power.
- 4, Make sure finger mouse and receiver are communicating successfully.

Specifications:

- 1, Resolution: 1000DPI
- 2, Radio frequency(RF): 2.4GHz
- 3, Working distance: 15 meters
- 4, Build-in lithium-ion battery: 3.7V 230mA
- 5, Charging time: 2 hours
- 6, Continue using time: 14 hours
- 7, Stand by time: 170 days
- 8, Dimension: 60*40*38mm(Mouse)
72*17*8mm(Receiver)
- 9, Net weight: 25g(Mouse) 10g(Receiver)
- 10, Interface: USB 1.0 or 2.0
- 11, System requirements:
WINDOWS 98 / 2000 / XP / NT / VISTA

Package includes :

- 1, Wireless mouse x1
- 2, Index finger rings: 3pcs in different sizes
- 3, Receiver x1
- 4, USB cable x 1
- 5, Instruction sheet x1

size:427.5x185mm

無線指戴光學滑鼠規格說明

產品特性

健康的---符合人體工學設計，可以讓手自然的在腿部上移動，長期使用對手肘傷害最小。



省力的---移動此滑鼠，僅需3~5 cm即可讓指標在整個螢幕遊走，可在最小範圍掌控畫面。

方便的---可在褲子或衣服等非全平表面上小幅移動即可操作。



輕巧的---小巧不佔空間，容易攜帶。使用方便，並可於使用滑鼠時同時打字。

實用的---於作簡報時戴上本滑鼠，可獨立完成螢幕上任何的操作。

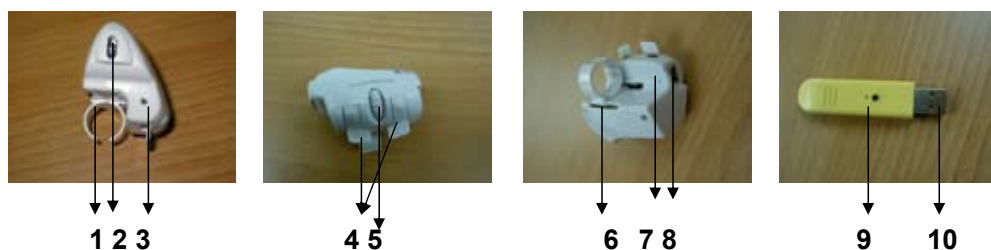


超越一般簡報控制機的功能,更易掌控全場互動。

經濟的---內置優質的鋰電，可以充放電數百次，不與一般滑鼠常需要花錢買電池。



機器及控制位置說明:



1. 指環 2. 感應光學頭 3. 對頻按鈕 4. 左右按鍵 5. 滾輪 6. 指環插槽 7. 充電指示燈 8. USB插槽 9. 接收器對頻按鈕及指示燈 10. 接收器USB插頭

使用說明 :

開使用:



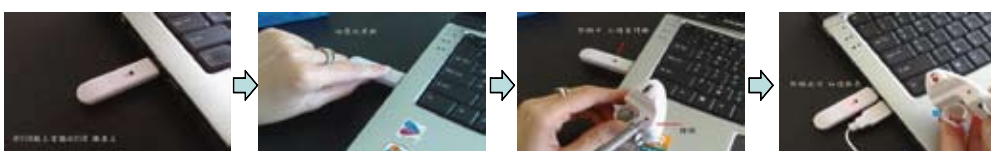
1. 首先選擇適合您右手手指大小的指環。

2. 請將指環較長一邊的卡柱先卡到內側的卡槽,再另一邊卡入即完成,拔下時同樣方式處理。



3. 將指環套入食指，置於第二節,或依個人喜好舒適方式處理,用大拇指左右鍵同時按下五秒即可開機,並彎曲食指將感應頭接觸鼠墊或感應區域,即可始用。

4. 再將接收器插上電腦的USB插槽,按下上方黑色小按鍵,紅色指示燈會急速閃爍再用筆尖將主機右前端的凹洞壓下開始二邊對頻,接收器指示燈恆亮時,完成對頻,即可開使使用。



待機時 :



1,自動待機:滑鼠不動五分鐘後自動待機,按任意鍵喚醒。



2,手動待機:左右鍵同時按下五秒鐘關機,左右鍵同時按下五秒鐘喚醒。

充電時 :



1,將所配屬的USB連接線分別插於電腦及主機上即開使充電。



2,充電時亦可同時操作本機,不需開置。

簡易故障排除:

當此無線指環滑鼠不動作時:

- 1,請確認開機,記得將左右鍵同時按下5秒即可開機。
- 2,請查核接收器是否接到電腦USB端口,
- 3,請確認電池有無電,若弱電時會反應慢,請將USB連接線接上充電。
- 4,請確認對頻成功沒有。

產品規格:

- 1,解析度: 1000DPI
- 2,無線頻段: 2.4G Mhz
- 3,內建鋰電池: 3.7V 230mA
- 4,充電時間: 2小時
- 5,使用時間: 14小時(連續使用) 170天(待機)
- 6,使用距離:0~15公尺
- 6,規格尺寸: 60*40*38mm(滑鼠主機)
72*17*8mm(接收器)
- 7,重量: 25g(滑鼠主機) 10g(接收器)
- 8,傳輸介面:USB 1.0 OR2.0
- 9,支援系統: WINDOWS98/2000/XP/NT/VISTA

本盒內容物:

- 1,無線滑鼠主機一組
- 2,接收器一組
- 3,USB連接線一條
- 4,大,中,小各一組指環
- 5,說明書一份